

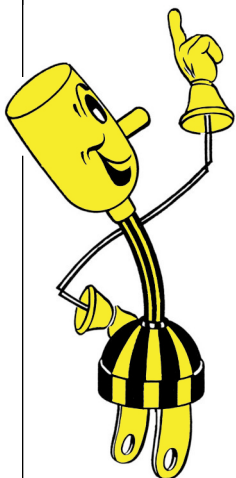


Energy Efficiency

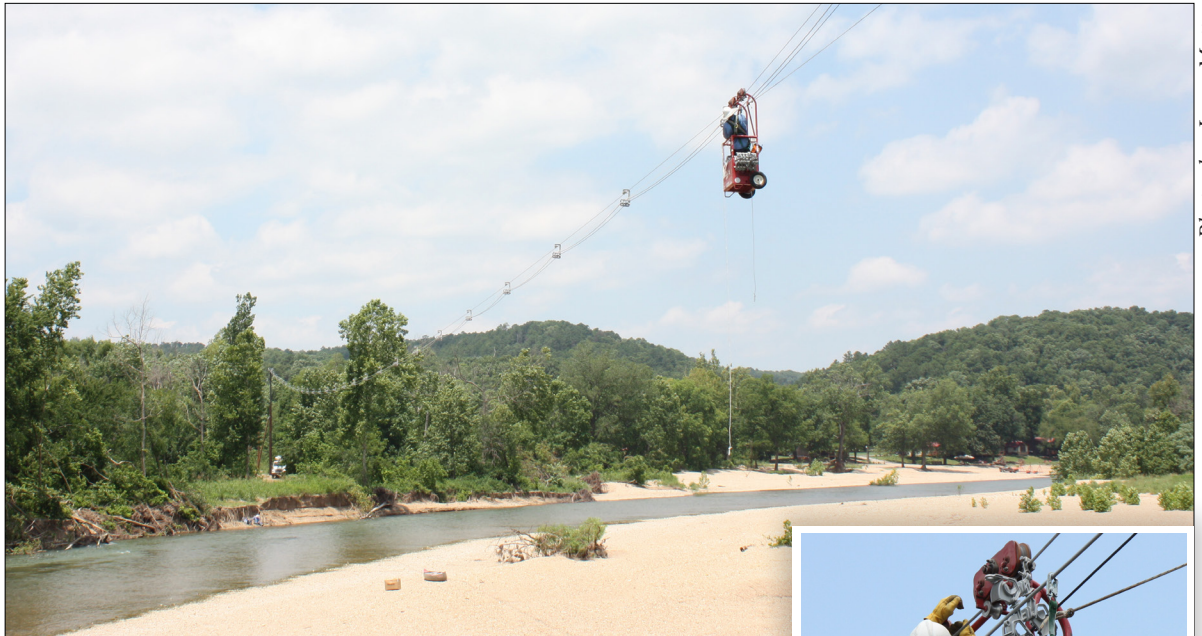
Tip of the Month

This summer, keep your kitchen cool with easy, no-bake recipes. Your air conditioner works extra hard during summer months to keep your home cool, so why not give it a break with easy, efficient, no-bake recipes.

Source: U.S Department of Energy



Building Electric Lines Across the Illinois River



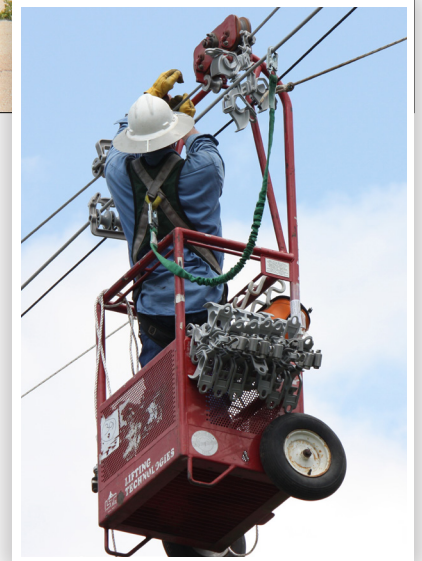
Photos by: Larry Mattes

Utility work 33 feet in the air over the Illinois River

A new Lake Region distribution electric line has been completed across the Illinois River north, of Tahlequah. LREC experienced damage to our electric poles on each side of the river after the May 2017 flooding. The river changes its channel causing trees, and other debris to damage or wash away electric poles. This damage from the flooding is one of the main reasons why LREC proceeded with using larger metal poles and rebuilding the wire across the Illinois River. The new metal poles are 65 feet tall and 3,060 pounds per pole.

With LREC's service territory surrounding several lakes and rivers, we do have these types of construction projects. However, each one is unique.

Our brave linemen stepped up to the task to pull electric conductor wire 1,004 feet across the Illinois River. Duane Watkins, Journeyman Lineman, used a high line single wire conductor trolley (pictured) and was able to successfully attach



Duane Watkins, Journeyman Lineman

to the electric line and move across the river 33 feet in the air, working from the trolley.

LREC linemen do whatever it takes to bring electric to the members.

Local Youth Tour Winners Return From Washington, D.C.



Students met with Congressman Markwayne Mullin and his wife while he gave a private tour of the Nation's Capitol Building. Senator Inhofe and Congressman Frank Lucas joined the students in the Longworth House office building and discussed current issues at the federal and state level.

Three local students were among more than 1,500 high school students who visited Washington, D.C. in June for the 2017 Washington Youth Tour. This trip was made possible by Lake Region Electric Cooperative along with hundreds of other electric cooperatives across Oklahoma and the country.

Eva Gahn, home schooled, daughter of Julie and David Gahn; Katy Boles of Coweta High School, daughter of Mindy Beers; and Chloe Waters of Coweta, daughter of Joe Waters joined around 70 other Oklahoma students for this great life changing educational event.

“The Youth Tour trip provides a great way for our future leaders to learn about government and electric cooperatives. By investing in these students, we believe we are investing in the future of our communities,” said Glen Clark, Youth Tour Coordinator.

LREC has sponsored the Washington Youth Tour for more than 53 years. The trip is designed to educate students about our Nation’s Capital, the sacrifices made for our freedom and the value of the cooperatives way of business. The students return home with a greater



Photo provided by: OAECC

Left to right: Eva Gahn, Katy Boles, and Chloe Waters

appreciation of our nation’s leaders, respect for the beauty of Washington, D.C., and friendships that will last a lifetime.

Applications for the 2018 Youth Tour will be available in January 2018, at the LREC office, or by calling Glen Clark at (918) 772-2526.

01

WHAT:

Annual Rural Electric Cooperative Youth Tour coordinated each year by the Oklahoma Association of Electric Cooperatives



70 high school juniors
10 chaperones
1 teacher

02

WHEN:

The Oklahoma Youth Tour was Friday, June 9 - Thursday, June 15. On Friday, a banquet was held for the 70 winners, representing 25 of the state’s rural electric systems. The group departed for Washington D.C., the next morning.



6-7
miles

Apple Watch and Fitbit users were averaging about 6-7 miles of walking each day!
About 10,000-16,000 steps per day!

03

WALKING ... AND MORE WALKING

The group visited many monuments, memorials, museums and historical sites during the six day trip. Along with touring D.C., the students joined other states during a Youth Day at the host hotel provided by NRECA. Students heard from NRECA’s finest and an inspiring motivational speaker. The Oklahoma group joined other states on a boat cruise on the Potomac River, as well. Everyone enjoyed trading pins at these events ... including the chaperones!

Lake Region Fiber Update

1,400 Members Installed

LRTC, powered by Lake Region Electric Cooperative, was introduced four years ago with a Pilot Zone. The introduction of the project was one of the most exciting moments for Lake Region and our members. The story has always been the same—our members asked us to provide high-speed internet to our area. We listened, and we acted. Phase one is in full swing with 14 expansion zones which have construction crews working in 4 of the 14 zones.

Fiber builds are expensive, time-consuming, frustrating, rewarding, and more. Every day brings something new, and it is not always easy making sure all members have the chance to be involved in the project updates. We send sincere thanks to every single member for their continued support, even during the challenges and frustrations.

We are proud to say that we have connected more than 1,400 members to Lake Region Fiber. To continue to be successful, we will continually evaluate the construction process, how we install the fiber to communities (boring underground vs. aerial, as an example), the equipment we use, the speeds we offer, new solutions that may be offered, the actual in-home installation process, and much more. There was no way that we could have predicted every bump or the outpouring of member requests to get fiber to their area. The realities of construction and member feedback have guided how we complete the work.

Response from our members has been extraordinary. We know it can be frustrating for people to realize that their community may not be able to get fiber this year. With more than 3,000 miles of electric lines in eight counties, it will take years to provide service in all LREC communities. The more communities that get active fiber optic service, the more the excitement grows—let's keep the momentum going.

Which zones will be next?

Fiber is being delivered first to zones who have shown the most interest by pre-registering at

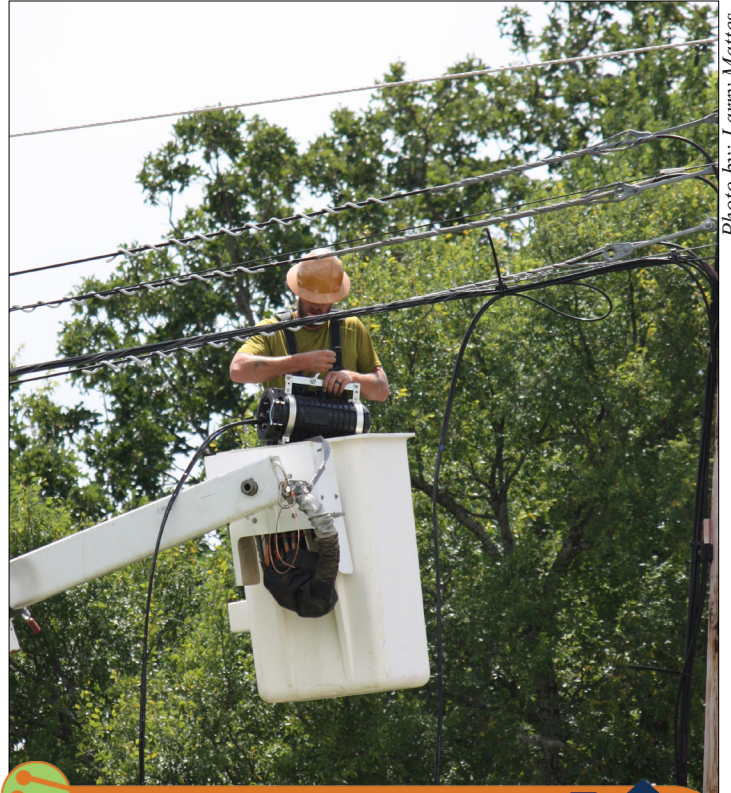


Photo by: Larry Mattes



register.lrecok.net However; this is just one way we evaluate when and where Lake Region can build. We also evaluate factors that influence overall costs, such as a community's geography and timeline for seeing a positive financial return on our investment, among other factors. The end goal is to provide access to our network to every LREC member, but there must be interest from the members and the incoming revenue from areas that may receive the service to support the continued build.

An entire fiber project cannot be built overnight or even within two years. The continued patience and support of our members is what will make Lake Region Fiber Optics a long-term success.

More info on prices and service can be found at www.lrecok.net or by calling 918-772-2526.

Gross Receipts Tax Provides Much Needed Money for Rural Schools

Electric co-ops pay gross receipts tax to the Oklahoma Tax Commission. The Tax Commission then distributes 95 percent of these funds to schools based on the number of miles of cooperative lines in each school district.

It is worth noting that investor-owned utilities pay ad valorem taxes, but only 50 to 60 percent of these funds go to schools.

In 2016, Lake Region Electric Cooperative (LREC) paid \$726,785.95 in gross receipts tax. These funds benefited 33 local schools in LREC's service territory.

The chart (on the right) shows the allocation of school funds in LREC's area. Tax distribution varies from school to school because some school districts have more miles of cooperative electric lines.

Because rural schools benefit directly from these taxes, LREC and other Oklahoma electric cooperatives firmly support this program. Over the years, various proposals to change the tax structure would have diverted funds away from rural schools. *10120010* These plans were met with opposition from rural school leaders and electric cooperative officials.



\$\$\$\$\$\$\$\$

School District	Miles of Line	Taxes paid in 2016
Braggs	49.36	\$17,935.31
Briggs	116.39	\$17,718.72
Broken Arrow	84.67	\$4,569.50
Catoosa	260.88	\$4,362.46
Chouteau/Mazie	19.82	\$4,053.74
Coweta	347.94	\$56,094.41
Fort Gibson	217.78	\$27,563.01
Gore	128.50	\$214.16
Grandview	95.15	\$31,744.58
Haskell	63.48	\$4,694.72
Hulbert	69.10	\$61,778.09
Inola/Gregory	150.17	\$16,287.17
Jay	134.05	\$38.43
Kansas	74.82	\$11,688.64
Keys	0.79	\$51,572.86
Leach	66.06	\$299.37
Locust Grove	18.42	\$37,396.68
Lowery	19.29	\$30,430.54
Moseley	184.49	\$32.54
Muskogee	236.88	\$695.28
Norwood	377.51	\$22,533.22
Oaks Mission	17.11	\$20,051.89
Okay	1.61	\$15,644.11
Peggs	157.92	\$35,561.88
Porter	14.51	\$43,689.96
Shady Grove	12.41	\$16,363.54
Tahlequah	2.93	\$82,393.96
Tenkiller	75.73	\$187.52
Wagoner	68.77	\$89,396.59
Webber Falls	1.26	\$2,939.61
Westville	0.16	\$3,437.70
Wickliffe	0.13	\$382.34
Woodall	0.90	\$15,033.42
Total	3069.15	\$726,785.95

Board of Trustees

- Bobby MayfieldPresident
- Scott Manes.....Vice-President
- Lynn LamonsSecretary -Treasurer
- Randall Shankle.....Asst. Secretary-Treasurer
- Gary Cooper Trustee
- James Walls Trustee
- Jack TeagueTrustee

Staff

- Hamid VahdatipourCEO
- Ben McCollumDirector of Finance
- Logan Pleasant.....Director of Operations
- Stanley YoungDirector of Marketing
- Larry MattesEditor
- Tina Glory-JordanAttorney

Office Hours

Monday-Friday
8:00 a.m. - 4:30 p.m.

Telephone

800-364-LREC or
918-772-2526

Website:

www.lrecok.coop

Locations

Hulbert, Wagoner &
Tahlequah, OK.

Main Office Address

P.O. Box 127
Hulbert, OK 74441

Hidden Account Number

Look for your account number hidden in this issue of the *Powerline Press*. If you find your number, Lake Region Electric will credit your next bill.

To claim your credit, notify LREC's Hulbert office by phone or mail during the month of publication.

The amount increases by \$10 with each issue your prize goes unclaimed to a maximum of \$50.

For more information, call **800-364-LREC** or **918-772-2526**

Cooperative bylaws are available upon request at Lake Region Electric Cooperative's office in Hulbert.