



# Powerline Press

## NEWSLETTER

A Supplement of Oklahoma Living Published by Lake Region Electric Cooperative for its members.

May 2017

Vol. 8

No. 5



### Energy Efficiency *Tip of the Month*

Periodically inspect your dryer vent and hose to ensure it is not blocked. This will save energy and may prevent a fire. Manufacturers recommend using rigid venting material – not plastic vents that may collapse and cause blockages.

#energyefficiency

Source: Energy.gov



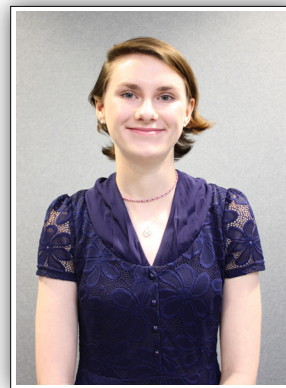
### Annual Meeting

Look for our Annual Meeting election results, prize winners, and photos in our June issue of the Powerline Press.



Lake Region Electric Cooperative is pleased to announce the selection of three delegates to participate in the 2017 Electric Cooperative Youth Tour trip to Washington, D.C. The selections were made based on essays written on a topic chosen by the cooperative. From the essays entered, the local schools selected their finalists to compete in the final question and answer session held at the LREC main office in Hulbert. A panel of three judges interviewed the students based on their subject knowledge, personality, speaking ability, and presentation. All of the participating students who qualified for the final judging received a \$50 cash prize.

The Youth Tour competition is available to all students in LREC's service territory who are completing their junior year in high school. Glen Clark, Youth Tour Coordinator, visited local schools in the



Left to right: Chloe Waters, Eva Gahn, and Katy Boles

service area with a presentation about the electric cooperative history and the Annual Youth Tour trip.

LREC is pleased to have these three students representing the cooperative for the 2017 Youth Tour: Chloe Waters of Coweta High School, daughter of Joe Waters; Eva Gahn, homeschooled daughter of Julie and David Gahn; and Katy

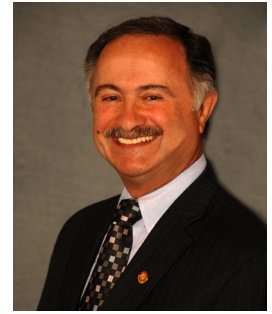
Boles of Coweta High School, daughter of Mindy Beers.

The trip will begin June 9th, when they join other winners from across Oklahoma for a "Get Acquainted Banquet" in Oklahoma City. The delegates will board a plane the following morning and fly to Washington, D.C.



Group photo of the 2017 LREC final judging finalists. Thank you to all the students for participating in this year's LREC final judging contest.

# 2016 Year End Review and Update on Co-op



Hamid Vahdatipour, CEO

## To our Members,

LREC wrapped up the fiscal year 2016 (FY 2016) maintaining a healthy financial position despite the lower energy sales due to mild winter and summer temperatures. Total kWh sales were 4.7% lower than projections. Lower sales failed to generate adequate revenues to cover all the operating expenses of the cooperative. LREC ended the year with an operating deficit of \$664,672. However, the addition of the non-operating revenues enabled us to end the year with \$494,391 in total margins.

Our members' equity decreased to \$48,582,500 and long-term debts increased to \$48,953,018. The equity as a percent to total assets remains very strong at 47%. Total utility plant was increased by \$5 million to \$103,423,488, and the non-utility plant was increased by \$1.7 million to \$11,708,956 mainly due to the Fiber-to-the-Home project construction.

## Other highlights from the fiscal year include:

- LREC's modified debt service coverage for the FY 2016 was 1.2, and the total debt to asset ratio was 35%.
- The average residential kWh usage per month was 1,136 kWhs.
- Total miles of line were 3,078 which served an average of 24,507 meters.
- Total purchased power cost as a percent of revenue continues to increase. Power cost was 64.8% of total revenue for FY 2016. This ratio for FY 2008 was 56.5%.

We strive to maintain the lowest possible rates and yet provide a reliable service to our members. Lake Region Electric Cooperative's mission, adopted by the

board of directors, charges the cooperative to promote and sustain the self-reliance of members by providing the most reliable utility service at competitive rates.

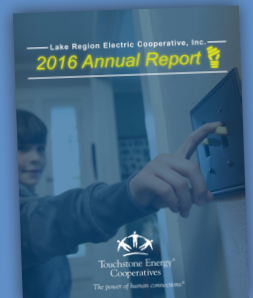
LREC remains committed to providing the best quality of service to our members by maintaining and upgrading the utility plant. Vegetation control continues to be a top priority for LREC.

After the success of LREC's pilot Fiber-To-The-Home project, the Board has decided to continue the endeavor to provide high-quality state of the art broadband service to its members by starting the phase one construction of fiber optic lines. This phase includes construction of over 800 miles of fiber optics which will bring high-speed internet to over 9,000 homes. This is the first phase of a three-phase project that started in August of 2016. The Phase One project is expected to be completed in the first quarter of 2019.

In December of 2016, the board was pleased to approve a patronage capital retirement/refund of \$1,076,181 to the members, bringing to total funds refunded to the members to \$19,608,444.

Excellent customer service, strong financial condition, and rate stability have been among the top drivers directing Lake Region Electric Cooperative's long-range planning and day-to-day operations. We are pleased to announce that we have met or exceeded those goals for 2016.

Lake Region  
Electric Cooperative's  
2016 Annual Report is  
available online at  
[www.lrecok.coop/annual-reports](http://www.lrecok.coop/annual-reports)







## DIG SAFELY

### Call 811 first

Safe  
Electricity.org



**“An underground line is damaged every six minutes! Call 811 Okie before you dig!”**

Dial 811 from anywhere in the country a few days before digging and your call will be routed to your

local One Call Center. Tell the operator where you’re planning to dig, what type of work you will be doing, and your affected local utility companies will be notified about your intent to dig. In a few days, they’ll send a locator to mark the approximate location of your underground lines, pipes, and cables, so you’ll know what’s below - and be able to 3047200 dig safely.

*Information collected from the Common Ground Alliance*

## GENERATOR SAFETY TIPS

Never connect a standby generator into your home’s electrical system. There are only two safe ways to plug in a standby generator to your equipment.

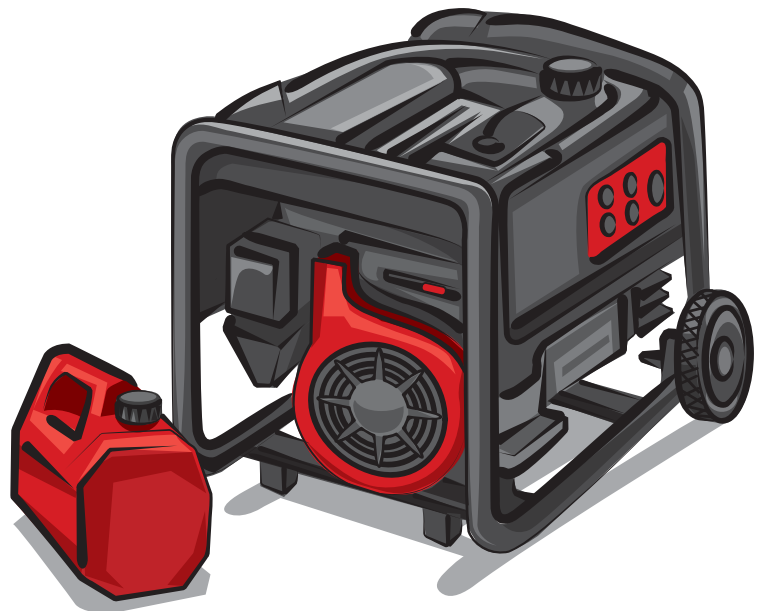
### **Stationary Generator:**

An approved generator transfer switch, which keeps your house circuits separate from the electric co-op, should be installed by a professional. LREC does offer these transfer switches. Call LREC for more information at 918-772-2526.

### **Portable Generator:**

Plug appliances directly into the outlet provided on the generator. Set up and run your generator in a well-ventilated area outside the home. Make sure it’s out and away from your garage, doors, windows and vents. The carbon monoxide generated is deadly.

Use a heavy-duty extension cord to connect electric appliances to the outlet on the generator. Start the generator first before connecting appliances.



*Source: SafeElectricity.org*

# Teachers Help Co-op Youth Tour Program Succeed



If it were not for all the great local teachers helping LREC's Youth Tour program, the program would not be the success it is today. Local school teachers are contacted by Glen Clark, Member

Services, at LREC about the Annual Youth Tour trip. The teachers who participate, help by selecting and sending top students from their school in LREC's service territory to the Youth Tour Judging competition, held every year in March.

The top three students who win the competition receive a free trip to Washington D.C. to learn more about rural electric cooperatives and the history of our capital.

Each teacher that sends LREC students is entered in a prize drawing, and this year's winner was Jentri Guinn of Porter High School. Jentri won an iPad from LREC.

If you would like more information about LREC's Youth Tour program or how your school or student can apply, please call Glen Clark at 918-772-2526.

# Journeyman Lineman Certification

LREC employee Randall Scott was recognized during the Oklahoma Association of Electric Cooperatives (OAEC) Annual Meeting for earning his Journeyman Lineman certifications. Scott has completed the OAEC Journeyman Lineman training program.

The individual must complete four years of classroom training and book work plus a set number of hours of technical on-the-job training to receive the Journeyman Lineman certification. The program provides instructions on all aspects of working in the co-op's operations department. The program meets both national and state certification requirements.

LREC would like to congratulate



Photo courtesy of OAEC

Jack Clinkscale, Chairman of Certification Committee, congratulates LREC linemen, Randall Scott

Randall Scott on completing the Journeyman Lineman training.

## Lineman Appreciation Day

On April 18th we honored the men who work hard at keeping the power on. These linemen battle the bitter cold and the blistering heat doing everything they can to provide reliable service to our members. Our linemen are some of the first responders during storms. Linemen work with thousands of volts of electricity every day of the year, under dangerous conditions. Lets recognize those individuals who weather the storms to keep the lights on. **#THANKALINEMAN**



Photo by: Larry Mattes

(Left to right) Tom Adams, 40 years of service, Dean Buford, 31 years of service, John Hall, 36 years of service.

### Board of Trustees

- Bobby Mayfield .....President
- Scott Manes.....Vice-President
- Lynn Lamons .....Secretary -Treasurer
- Randall Shankle.....Asst. Secretary-Treasure
- Gary Cooper ..... Trustee
- James Walls ..... Trustee
- Jack Teague .....Trustee

### Staff

- Hamid Vahdatipour .....CEO
- Ben McCollum .....Director of Finance
- Logan Pleasant.....Director of Operations
- Stanley Young .....Director of Marketing
- Larry Mattes .....Editor
- Tina Glory-Jordan .....Attorney

### Office Hours

Monday-Friday  
8:00 a.m. - 4:30 p.m.

### Telephone

800-364-LREC or  
918-772-2526

### Website:

[www.lrecok.coop](http://www.lrecok.coop)

### Locations

Hulbert, Wagoner &  
Tahlequah, OK.

### Main Office Address

P.O. Box 127  
Hulbert, OK 74441

### Hidden Account Number

Look for your account number hidden in this issue of the *Powerline Press*. If you find your number, Lake Region Electric will credit your next bill.

To claim your credit, notify LREC's Hulbert office by phone or mail during the month of publication.

The amount increases by \$10 with each issue your prize goes unclaimed to a maximum of \$50.

For more information, call **800-364-LREC** or **918-772-2526**

**Cooperative bylaws** are available upon request at Lake Region Electric Cooperative's office in Hulbert.